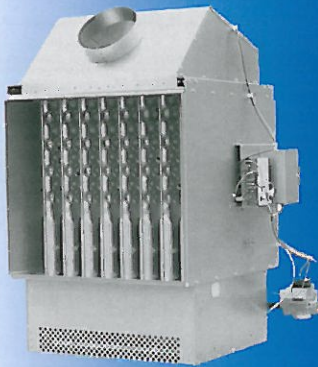


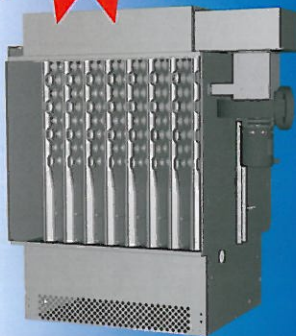
GAS-FIRED, GRAVITY AND POWER-VENTED DUCT FURNACES

- Low Initial Cost • Applications Cover Heating and/or Make-Up Air • 75,000 to 400,000 Btu/Hr Input Capacity
- 80% Minimum Thermal Efficiency • Low Maintenance • Easy to Service



**MODEL DFG
GRAVITY VENTED**

**COMING
SPRING
2009**



**MODEL DFP
POWER VENTED**

The Modine indoor duct furnace was designed for use with a building's heating, heating/cooling and make-up air systems. Available in 11 model sizes, in both gravity and power vented configurations, the unit covers a wide variety of applications. They have input ranges from 75,000 to 400,000 Btu/Hr and can operate on either natural or propane gas. The airflow direction can be specified when ordering the unit. The duct furnace is certified for location either upstream or downstream from cooling coils and has a drain pan that allows connection to a condensate drain line.

Standard Features:

- C.S.A. certification
- ETL certification
- All units a minimum of 80% thermally efficient
- 20 gauge aluminized steel cabinet
- Certified to 3.0" W.C. external static pressure for high static applications

Optional Features:

- 409 stainless steel heat exchanger and burner
- 409 stainless steel drip pan
- Two-stage, mechanical modulation, and electronic modulation controls for either natural or propane gas
- Building management compatible gas controls for modulation control using 0 - 10 Vdc or 4 - 20 mA input
- High and/or low gas pressure switches

Performance Data ① ② ③

DFG/DFP Model Size	Btu/Hr		Without Air Baffle		With Air Baffle	
	Input	Output	Temperature Rise Range (°F)	CFM Range	Temperature Rise Range (°F)	CFM Range
75	75,000	60,000	20 - 60	926 - 2,778	20 - 100	556 - 2,778
100	100,000	80,000	20 - 60	1,235 - 3,704	20 - 100	741 - 3,704
125	125,000	100,000	20 - 60	1,543 - 4,630	20 - 100	926 - 4,630
150	150,000	120,000	20 - 60	1,852 - 5,556	20 - 100	1,111 - 5,556
175	175,000	140,000	20 - 60	2,160 - 6,481	20 - 100	1,296 - 6,481
200	200,000	160,000	20 - 60	2,469 - 7,407	20 - 100	1,481 - 7,407
225	225,000	180,000	20 - 60	2,778 - 8,333	20 - 100	1,667 - 8,333
250	250,000	200,000	20 - 60	3,086 - 9,259	20 - 100	1,852 - 9,259
300	300,000	240,000	20 - 60	3,704 - 11,111	20 - 100	2,222 - 11,111
350	350,000	280,000	20 - 60	4,321 - 12,963	23 - 100	2,593 - 11,111
400	400,000	320,000	20 - 60	4,938 - 14,815	27 - 100	2,963 - 11,111

① Ratings are shown for elevations up to 2,000 feet.

② Units approved for use in California by GEC.

③ When high rates of CFM are used, the air distribution baffle may be removed to reduce the pressure drop through the duct furnace.

DFG is design certified by CSA for the gas heating furnace section, and ETL for the electrical controls.
DFP is design certified by ETL for both the gas heating furnace section and the electrical controls.



DO NOT LOCATE ANY GAS-FIRED UNIT IN AREAS WITH CHLORINATED, HALOGENATED OR ACIDIC VAPORS IN ATMOSPHERE.

Request Catalog 5-174 For Complete Technical Information and Specifications.