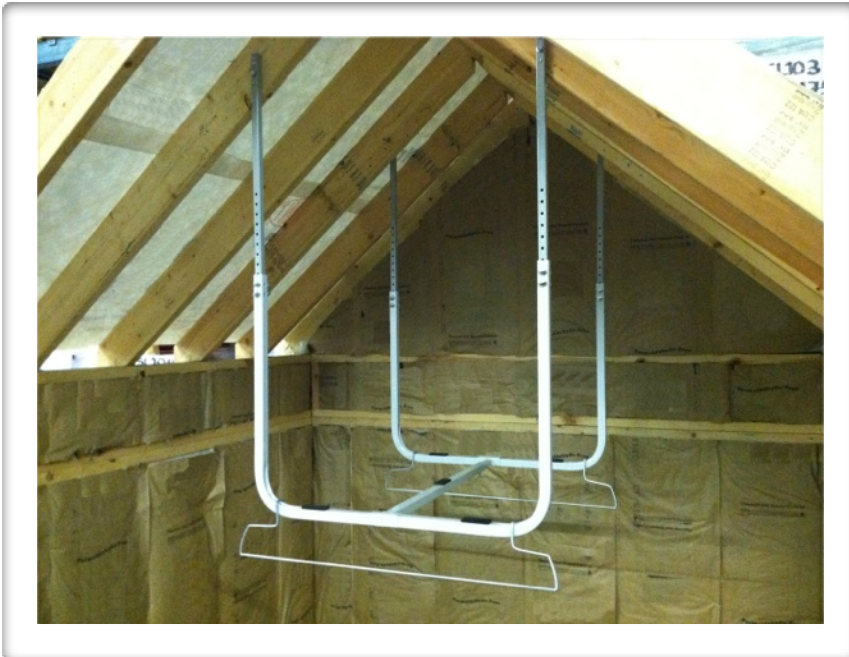


QUICK-SLING

The safe & affordable install

Applicable for residential or light commercial installations



How many pieces of unistrut & threaded rod would this take: add to that all your nuts, bolts & washers?

How much time would it take you to collect the materials & install a comparable platform?

Now add a cased coil...OH NO!

We are glad to introduce to you Quick-Sling, LLC., a line of hangers & stands that provides a sturdy platform for furnaces & air-handlers within residential & light commercial use.

Our goal is to save you time & money so that YOU HAVE MORE TIME TO MAKE MORE MONEY.

Quick-Sling Light Duty QSLD1001

A close-up look:



Each arm attaches to wood using 2 zip screws for stability & a 4" through bolt & wing nut for security. Install to steel utilizing steel beam adapters (sold separately).



Extension arms individually adjust in one inch increments using thumb screws & wing nuts for speed & versatility. Installs as high as 36" or as low as 54" on flat or pitched roofs.

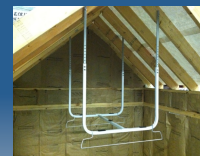


Our Quick-Sling is made of 14 gauge square, steel tubing which cuts down vibration and is able to hold up to 250 lbs.

32" secondary drain pan hangers are provided & install in seconds.
*Drain pan not included.



28 points of anti-vibration isolation is provided utilizing four 50-derometer self-adhesive rubber pads & 24 rubber washers.



Adjustable in 2 dimensions:
Height: 36" to 54"
Length: 30" to 48"
Fixed Width: 31 3/4"

Patent Pending

Quick-Sling provides you with a non-swinging, solid platform that is quick, safe, stable and affordable.

Quick-Sling, LLC. – the HVAC installation that installs in minutes

The Quick-Sling advantage:

- * Installation is quick
- * Passes inspections in all 50 states
- * Quick-Sling is powder coated to last
- * Provides a safe & secure foundation
- * All necessary hardware is provided
- * Fully adjustable for virtually all applications

QUICK-SLING

391 West Water Street
Taunton, MA 02780
Phone: 1.800.699.0453
Fax: 1.800.699.0423
www.Quick-Sling.com