



KINGSTON

OIL-FIRED STEAM BOILER

Designed for reliability,
high efficiency and
performance for
residences with
chimneys



Series KSZ - Kingston Features

- ✓ ENERGY STAR RATED WITH EFFICIENCIES UP TO 85.4%*
- ✓ RUGGED WET BASE, CAST IRON HEAT EXCHANGER
- ✓ CAST IRON SWING-OPEN BURNER DOOR FOR EASY SERVICE
- ✓ OPTIONAL SIDE-MOUNTED TANKLESS COIL FOR DOMESTIC HOT WATER
- ✓ CHOICE OF THREE OIL BURNERS: BECKETT, RIELLO, CARLIN

* ENERGY STAR FOR CERTAIN FIRING RATES. SEE BACK FOR DETAILS.

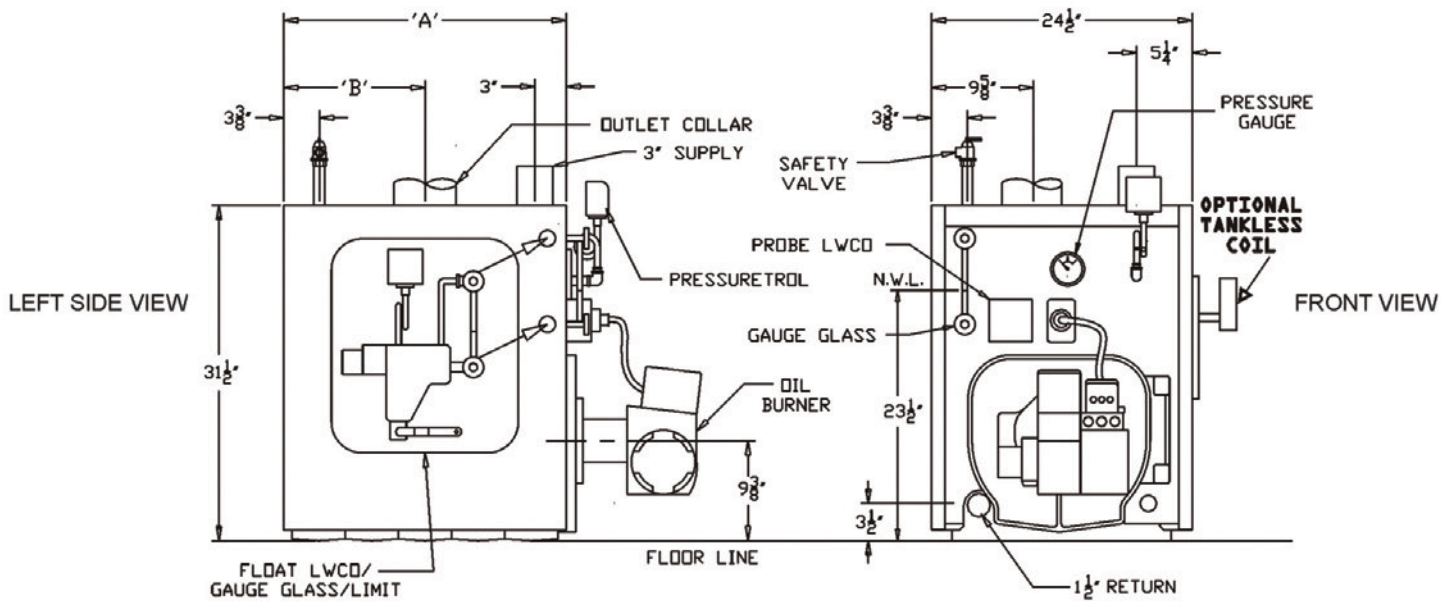
CrownBoiler.com





Constructed and tested
in accordance with
ASME Section IV

SERIES KSZ - KINGSTON TECHNICAL INFORMATION



MODEL NUMBER	NO. SECTIONS	D.O.E HEATING CAPACITY (BTU/HR)	IBR NET RATING STEAM (BTU/HR)	IBR NET RATING STEAM SQ. FT.	BURNER CAPACITY GPH	AFUE (%)	TANKLESS HEATER GPM	CHIMNEY SIZE IN. x IN. x FT.	DIMENSION (INCHES)		FLUE COLLAR DIAMETER (INCHES)	SHIPPING WEIGHT (APPROX.)
									A	B		
KSZ065	3	79,000	59,000	246	0.65	85.1 ★	2.25	8 x 8 x 15	16 - 1/2	8 - 1/4	6	570
KSZ075	3	90,000	68,000	283	0.75	84.5	2.25	8 x 8 x 15	16 - 1/2	8 - 1/4	6	570
KSZ100	3	119,000	89,000	370	1.00	83.5	2.50	8 x 8 x 15	16 - 1/2	8 - 1/4	6	570
KSZ090	4	110,000	83,000	346	0.90	85.0 ★	2.50	8 x 8 x 15	21 - 1/2	10 - 3/4	7	690
KSZ125	4	149,000	112,000	467	1.25	84.2	2.75	8 x 8 x 15	21 - 1/2	10 - 3/4	7	690
KSZ150	4	177,000	133,000	554	1.50	83.1	3.00	8 x 8 x 15	21 - 1/2	10 - 3/4	7	690
KSZ120	5	147,000	110,000	458	1.20	85.4 ★	2.75	8 x 8 x 15	26 - 1/2	13 - 1/4	8	810
KSZ175	5	207,000	155,000	646	1.75	83.1	3.25	8 x 8 x 15	26 - 1/2	13 - 1/4	8	810
KSZ200	5	235,000	176,000	733	2.00	82.9	3.50	8 x 8 x 15	26 - 1/2	13 - 1/4	8	810

Notes: ★ Energy Star rated product.

1. Net ratings are based on piping and pick up allowances of 1.33.
2. Burner Capacity Rating, GPH is based on #2 oil with a Gross Heating Value equal to 140,000 BTU/Gal.
3. Maximum Working Pressure, Steam - 15 PSI.

All residential cast iron boilers include a full one year warranty. A 12 year limited warranty is provided for the cast iron heat exchanger. A 5 year and a 10 year extended warranty covering parts and labor are also available. Visit CrownBoiler.com for complete details.

ADDITIONAL FEATURES / BENEFITS

- Three physical sizes with nine firing rates
- Factory-tested Honeywell control system
- Attractive split jacket easily removed for servicing
- Burner equipped with twist disconnect plug
- Available in "Shorty" pac version with burner and controls packaged separately for easy delivery



CrownBoiler.com
PHILADELPHIA, PA