

# QUICK-SLING

## The safe & affordable install

*Applicable for residential or light commercial installations*



How would you install an attic system like this: cinder blocks & wood, a drain pan on 2x4's?

How much time would it take you to collect the materials & install a comparable platform?

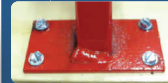
Now add a cased coil...OH NO!

We are glad to introduce to you Quick-Sling, LLC., a line of hangers & stands that provides a sturdy platform for furnaces & air handlers within residential & light commercial use.

Our goal is to save you time & money so that YOU HAVE MORE TIME TO MAKE MORE MONEY.

### Quick-Sling Quick Stand SPECS QSTD1000

#### A close-up look:



Each foot attaches to wood using 4 zip screws for stability & security.



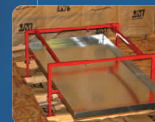
Each leg individually extends in one inch increments using thumb screws & wing nuts for speed & versatility. Installs as low as 12" or as high as 22" on flat or uneven surfaces.



Our Quick Stand is made of 14-gauge square, steel tubing which not only cuts down on vibration but is also able to hold up to 500 lbs.



20 points of anti-vibration isolation is provided utilizing four 50-derometer self-adhesive rubber pads & 16 rubber washers.



Secondary drain pan shelf is provided for a convenient install & future maintenance.  
\*Drain pan not included.



Adjustable in all 3 dimensions:  
Height: 12" to 22"  
Width: 32" to 48"  
Length: 32" to 48"

Patent Pending

*Quick-Sling Quick Stand provides you with a non-swinging, solid platform that is quick, safe, stable and affordable.*

## Quick-Sling, LLC. – the HVAC installation that installs in minutes

### The Quick-Sling Quick Stand advantage:

- Installation is quick
- Passes inspections in all 50 states
- Quick Sling is powder coated to last
- Provides a safe & secure foundation
- All necessary hardware is provided
- Fully adjustable for virtually all applications

# QUICK-SLING

391 West Water Street  
Taunton, MA 02780  
Phone: 1.800.699.0453  
Fax: 1.800.699.0423  
www.Quick-Sling.com