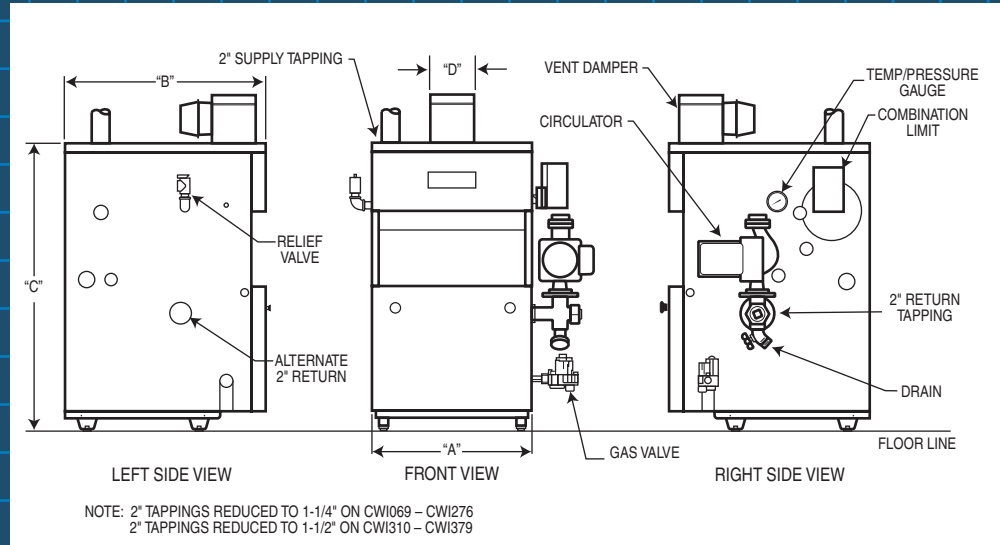




Satisfied customers are our goal. So CROWN boilers are factory assembled, pretested, and wired for reliable and quick installation. Servicing is easy, with features like convenient access doors and a jacket top knock-out that permits removal around supply piping.

A wide range of products and capacities serves most residential and commercial heating needs. Pricing is competitive, backed by attractive warranties and optional extended coverage.



NOTE: 2" TAPPINGS REDUCED TO 1-1/4" ON CWI069 - CWI276
2" TAPPINGS REDUCED TO 1-1/2" ON CWI310 - CWI379

SPECIFICATIONS

Basic Boiler Model	No. of Sections	Natural or LP Gas*					Tankless Heater Rating (Gal/Min)		Dimensions (in.)				Water Vol. (Gal.)
		Input BTU/HR	DOE Heating Capacity BTU/HR	IBR Net Water Rating BTU/HR	AFUE (%)		Standard	High Capacity	"A"	"B"	"C"	"D"	
					Standing Pilot	Int. Pilot							
CWI069	3	69	57	50	81.0	83.1	N/A	N/A	12-3/4	28	40-7/16	4	7.8
CWI103	4	103	86	75	81.3	83.1	2.50	N/A	16	28	40-7/16	5	10.0
CWI138	5	138	115	100	81.6	83.1	3.00	N/A	19-1/4	28	40-7/16	6	12.2
CWI172	6	172	144	125	81.8	83.2	3.50	N/A	22-1/2	28	40-7/16	6	14.4
CWI207	7	207	173	150	82.1	83.2	3.75	4.50	25-3/4	30	40-7/16	7	16.6
CWI241	8	241	202	175	81.1	83.2	3.75	4.75	29	30	40-7/16	7	18.8
CWI276	9	276	232	200	81.4	83.2	4.00	5.25	32-1/4	30	40-7/16	8	21.0
CWI310	10	310	259	225	83.5**		4.00	5.25	35-1/2	30	45-7/16	8	23.2
CWI345	11	345	288	251	83.5**		4.00	5.25	38-3/4	30	45-7/16	9	25.4
CWI379	12	379	316	275	83.5**		4.00	5.25	42	30	45-7/16	9	27.6

USA- For altitudes above 2,000 ft., ratings should be reduced at the rate of 4% for each 1,000 ft above sea level.

** Combustion Efficiency

1. Models CWI310, CWI345 and CWI379 - Vent damper not included.
2. Models CWI345 and CWI379 not available for use with LP Gas.
3. Please specify fuel (Natural Gas or LP Gas) and ignition system type (standing pilot or electronic ignition) when ordering.
4. Specifications and dimensions are subject to change without notice.

MASS. APPROVED

M.E.A. APPROVED
MEA 298-02-E



Heat Exchanger constructed and tested in accordance with ASME Section IV standard.



CROWN heating products are well made and designed for years of trouble free service. But if unexpected breakdowns should occur, you may find dealer service calls and parts can be costly. So...

Consider these benefits of CROWN's Extended Warranties

- You are fully covered for the cost of both parts and labor on qualified repairs to your CROWN heating product for your choice of Five or Ten full years after installation.
- There are no deductibles to pay, and no limit on the number or cost of repairs.
- The repairs can be performed by your installing contractor, the same company that you chose to perform the original installation and to provide your routine maintenance.
- If a problem occurs during the coverage period, just call your contractor; he'll take it from there.
- Coverage can be transferred if your home is sold, which will add to your home's sales value.

AVAILABLE FROM

CROWN Boiler Co.

Since 1949, homeowners have depended on us for quality, value and service

3633 I Street, P. O. Box 14818
Philadelphia, PA 19134
Phone: (215) 535-8900 Fax: (215) 535-9736
Visit us on the web: www.crownboiler.com

CWI-11/04-(15M)-R2
PN980532



Tankless coil available for domestic hot water

Larger sizes to serve residential as well as commercial needs

Higher efficiency that may help qualify for energy rebates



- Chimney vented
- Natural gas or propane
- Can be installed on non-carpeted combustible floors
- Latest in controls and safety features
- Built-in draft hood to fit low spaces
- Ten sizes from 69,000 to 379,000 BTU input
- Fully assembled and tested before shipment
- Available knocked down to ease delivery of larger sizes



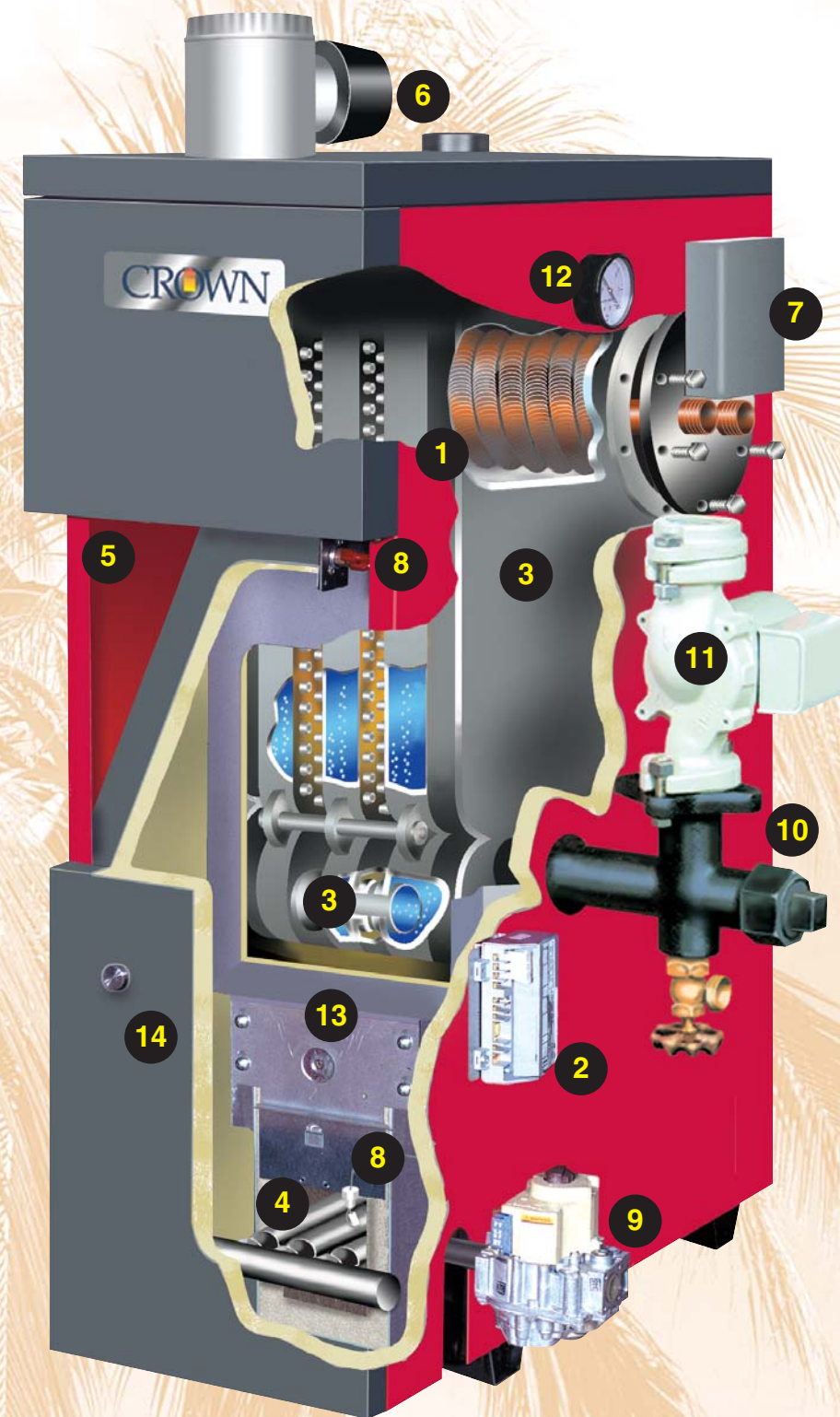
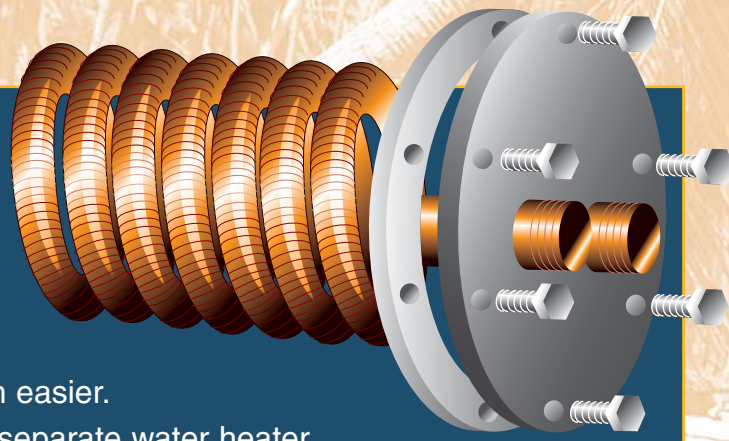
Cayman has all these features for optimum **safety** and **performance**

Designed with the benefit of CROWN's years of experience, employing technology proven in service, and with the newest in controls and safety features to optimize operation.

- 1 Optional tankless coil** provides domestic hot water when space is tight or for difficult installations. High capacity coils are available on Cayman's largest sizes. **Or, add a Mega-Stor** indirect water heater with the tapings provided.
- 2 Energy efficient:** Older boilers may measure 65% or less. The optional Honeywell electronic ignition can boost efficiency to 83.2% to help qualify where energy rebates are available. **Electronic ignition** lights the pilot only when the thermostat calls for heat.
- 3 Cast iron heat exchanger** quickly transfers heat from the flue gases to the boiler water to save fuel. Sections are joined by strong, corrosion resistant **iron push nipples** to provide a reliable, leak-free unit. CROWN offers a **lifetime limited warranty on your heat exchanger.**
- 4 Stainless steel burners with a lifetime warranty** are designed for quiet, trouble-free operation and optimum efficiency, and are convenient to clean and service.
- 5 Low-profile design,** employing a built-in draft diverter, provides a clean look and allows installation in low spaces.
- 6 Energy-saving motorized vent damper** on sizes up to 276,000 BTU automatically closes the flue between heating cycles to keep warm air you've paid to heat from going up the chimney. On larger sizes, the motorized damper is an option.
- 7 Honeywell Aquastat** provides reliability and convenience that appeal to the home owner. The Aquastat, which regulates the water temperature, is mounted directly into the heat exchanger for improved response.
- 8 Automatic safety switches** shut off the gas burners if a blocked chimney, insufficient draft or a blockage in the heat exchanger should occur.
- 9 Two-step gas valve** provides smooth and quiet operation.
- 10 Multi-functional circulator return fitting** on residential sizes has a flange for the circulator, built-in drain tapping and connection for additional zones.
- 11 Circulator is water lubricated** and needs no annual oiling.
- 12 Tridicator gauge** shows water temperature and pressure.
- 13 Corrosion-resistant base and flue** are constructed of aluminized steel.
- 14 Attractive, insulated jacket** resists chips and scratches.

Tankless coil: heats tap water only as you use it

- Designed for small spaces or difficult installations that preclude a separate water heater.
- Finned, copper coil heats water fast.
- No storage tank to take up floor space.
- Piping is simpler, which makes installation easier.
- Eliminates need for chimney venting of a separate water heater.



Factory tested for burner operation, gas leaks, control system operation and overall performance. The cast iron heat exchanger meets the specifications of the American Society of Mechanical Engineers (ASME). Design and construction are certified by the Energy Testing Laboratory (ETL), and efficiencies are determined by using U.S. Department of Energy test procedures and verified by the Hydronics Institute.



**CROWN's
Commitment
to Quality**

CROWN domestic water heaters are powered by the same fuel-efficient boiler that heats your home.



Stainless steel tank and coil



- Adjustable temperature control
- Convenient access cap for easy service
- Sizes from 26 to 119 gallons
- Space-saving, 40-gallon horizontal Mega-Stor can be stacked under a CROWN boiler for an even smaller footprint



Porcelain enamel tank and coil



- Convenient access cap
- Adjustable temperature control
- Sizes from 40 to 100 gallons